



Apt 4 11 Scoresby Street, Bradford, West Yorkshire BD1 5ET
£700 PCM

Locate is proud to present this luxury two bedroom duplex apartment in the heart of the city within this converted Building. Specification is to the highest of standards, using contemporary design for the style conscious individual with an eye for detail. Built in natural stone mixed with modern, the apartment benefits from secure entry system and is a stones throw away from the train station & Westfield re-development. An ideal rental with parking, integrated appliances and close to all amenities and University main campus.

Available from 10th August 2026

Locate
The Property Experts

Locate Properties UK LTD

29-31 North Parade, Bradford, West Yorkshire, BD1 3JL

t. +44 (0) 01274 720 900



@locatehomesbfd

e. info@locatehomes.co.uk



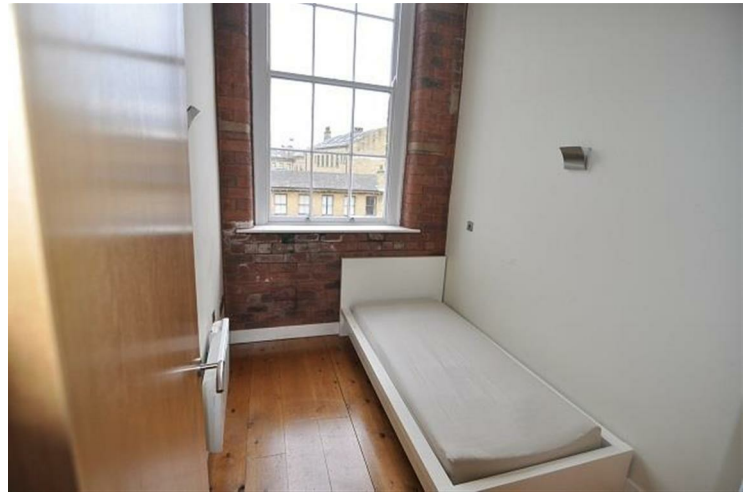
www.locatehomes.co.uk

Registered in England & Wales No. 5161728

ENTRANCE/VESTIBULE



BEDROOM TWO



OPEN-PLAN LOUNGE KITCHEN



BATHROOM



ANGLE TWO

KITCHEN ANGLE

BEDROOM ONE





Energy Efficiency Rating

	Current	Potential
Very energy efficient - lower running costs		
(92 plus) A		
(81-91) B		82
(69-80) C		
(55-68) D	62	
(39-54) E		
(21-38) F		
(1-20) G		
Not energy efficient - higher running costs		

England & Wales EU Directive 2002/91/EC

Environmental Impact (CO₂) Rating

	Current	Potential
Very environmentally friendly - lower CO ₂ emissions		
(92 plus) A		
(81-91) B		
(69-80) C		
(55-68) D		
(39-54) E		
(21-38) F		
(1-20) G		
Not environmentally friendly - higher CO ₂ emissions		

England & Wales EU Directive 2002/91/EC